

Multi-Tier Mapping

Empowering enterprise supply chains to be both lean and resilient



Our Multi-Tier Mapping approach is comprehensive and powered by 12 years of supplier-validated data

800K

Validated suppliers

1M

Validated Sites

4M

Validated Parts

100K+

Commodities

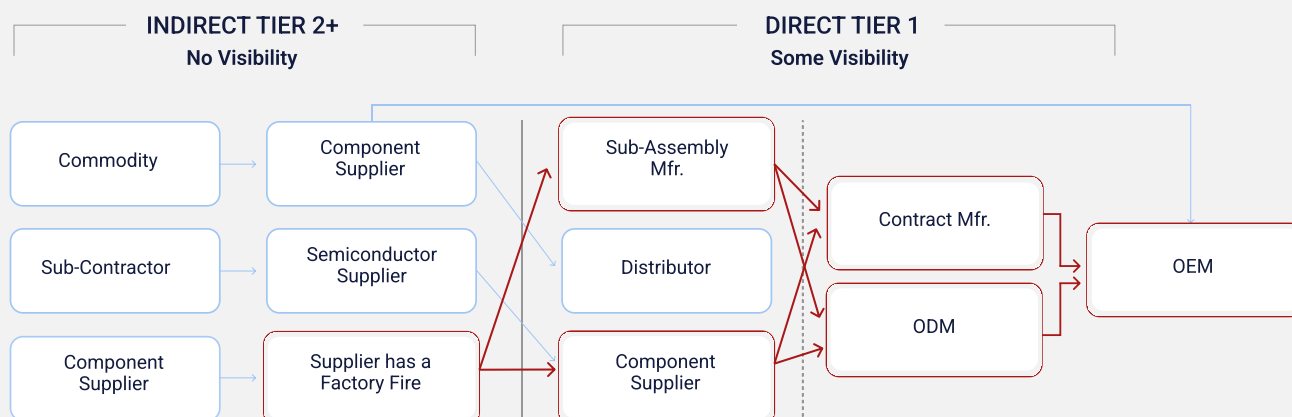
20+

Industries

Reduce freight expedites, prevent lines down, and optimize working capital despite global disruptions.

- Harness the power of sub-tier visibility and real time global monitoring of your supplier network.
- Collaborate with suppliers within hours of a disruption.
- Respond, recover, and get back to normal before your competition.
- Win market share, turn risk into an opportunity.

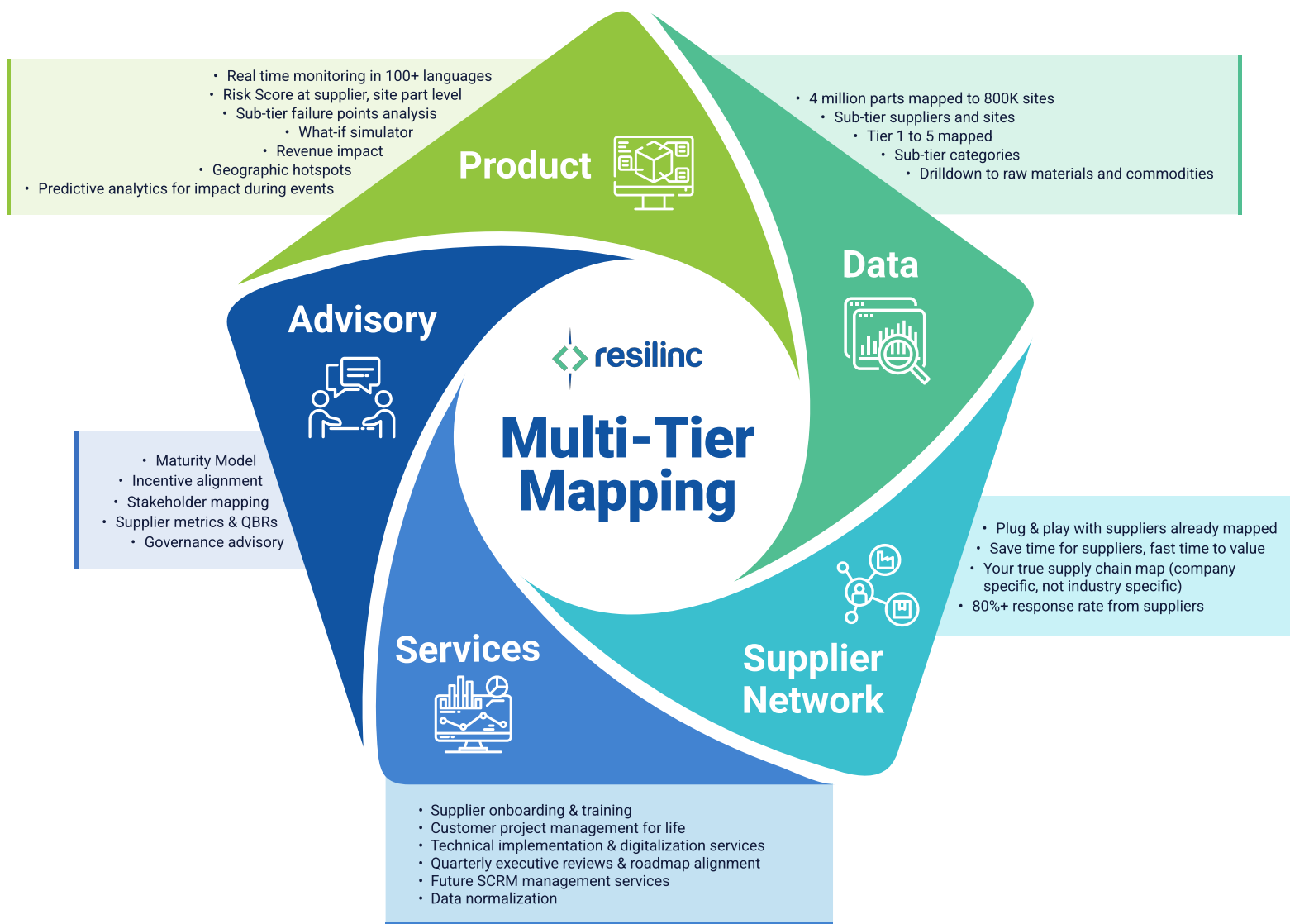
85% of disruptions are because of indirect Tier 2+ players



- + Global supply chain mapping intelligence with local reach supplier visibility across 20+ industries, 200+ countries; monitoring in 100+ languages

- + **Validated** dataset directly sourced from the supplier

- + Access to 40M+ autonomous mapping data elements for suppliers, sites, and parts



**Learn more about Resilinc's
Multi-Tier Mapping Solution**

**Contact us:
sales@resilinc.com**

Resilinc's unique open platform, best-in-class data, and cutting-edge technology drives our customers' success by advancing opportunities across finance and purchasing, operations and demand planning, and manufacturing and transportation. Our solutions can be delivered on-prem, in the cloud, or via API / ETL.

